

#NA
712
St4

1938

BUILDINGS ERECTED

BY

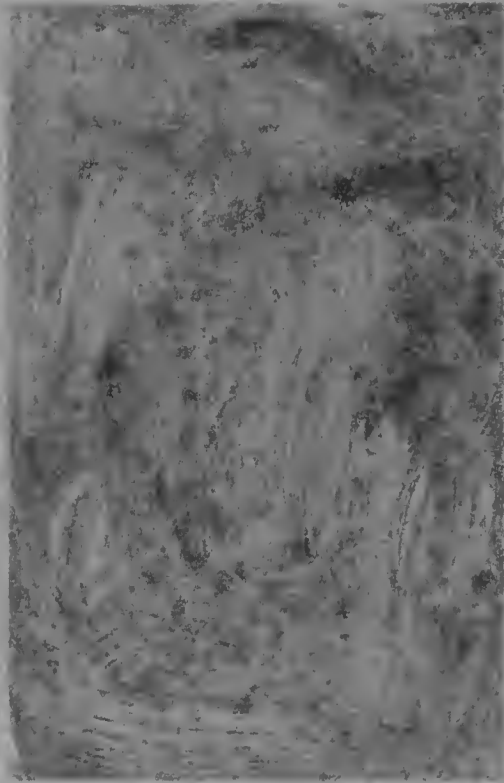
A. E. STEPHENS COMPANY

SPRINGFIELD, MASSACHUSETTS

NA

712

St 4

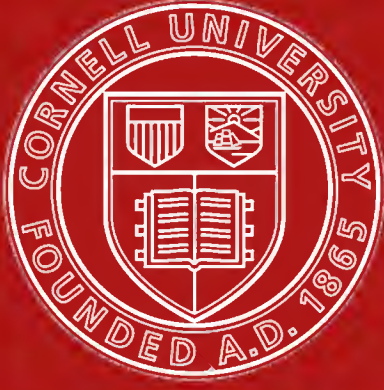


A. E. STEPHENS COMPANY

BUILDING CONSTRUCTION

SPRINGFIELD, MASSACHUSETTS





Cornell University Library

The original of this book is in
the Cornell University Library.

There are no known copyright restrictions in
the United States on the use of the text.

<http://www.archive.org/details/cu31924015335544>



MEDICAL COLLEGE FOR SYRACUSE UNIVERSITY, SYRACUSE, N. Y.

Office of John Russell Pope
Dwight James Baum, *Associate Architects*



ENTRANCE DETAIL



AUDITORIUM

MEDICAL COLLEGE FOR SYRACUSE UNIVERSITY, SYRACUSE, N. Y.

Office of John Russell Pope
Dwight James Baum, *Associate Architects*



BANKING BUILDING FOR SPRINGFIELD SAFE DEPOSIT AND TRUST CO. SPRINGFIELD, MASS.

Thos. M. James Co., Architects

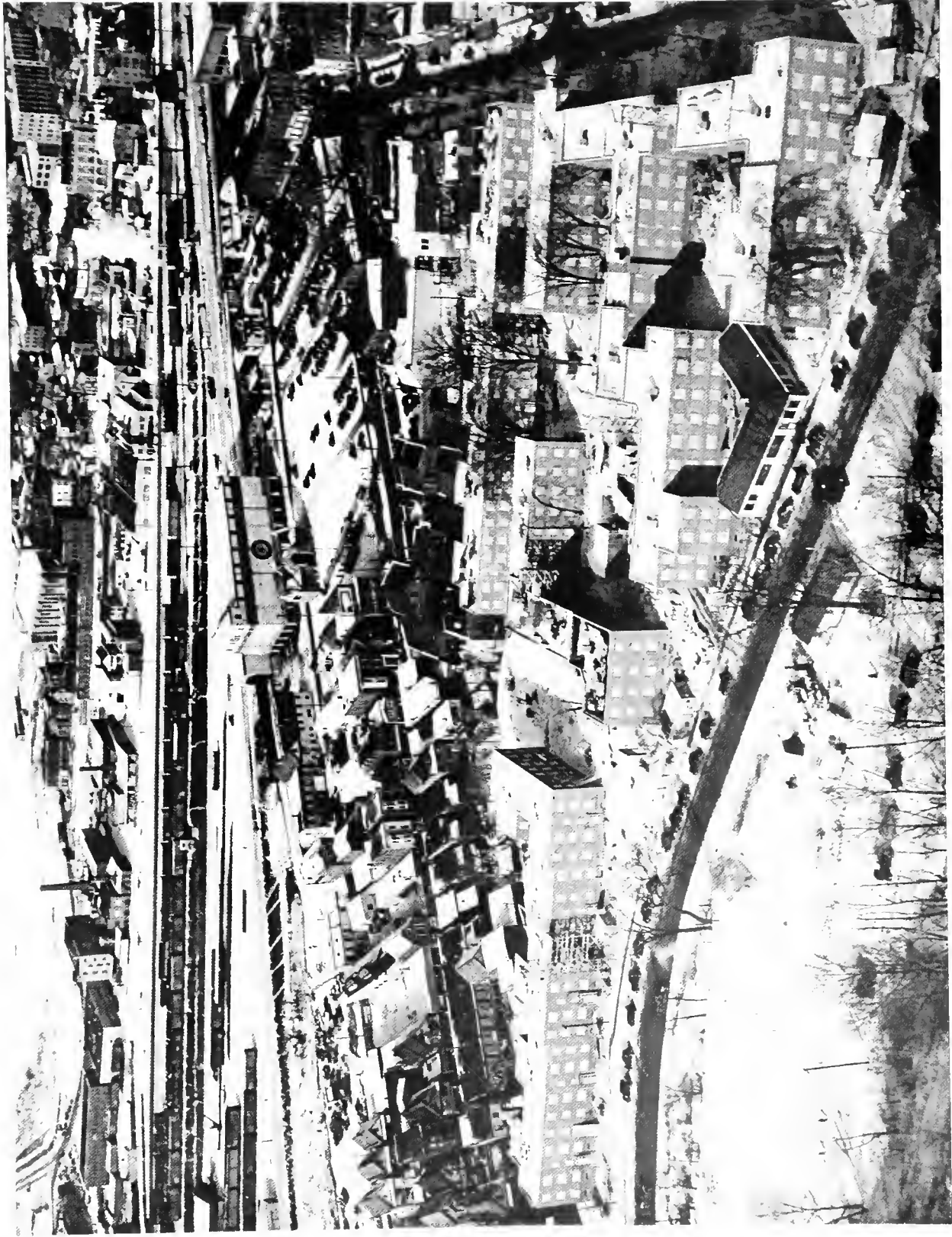


INTERIOR OF BANKING ROOM LOOKING TOWARD REAR



INTERIOR OF BANKING ROOM LOOKING TOWARD FRONT

Thos. M. James Co., Architects



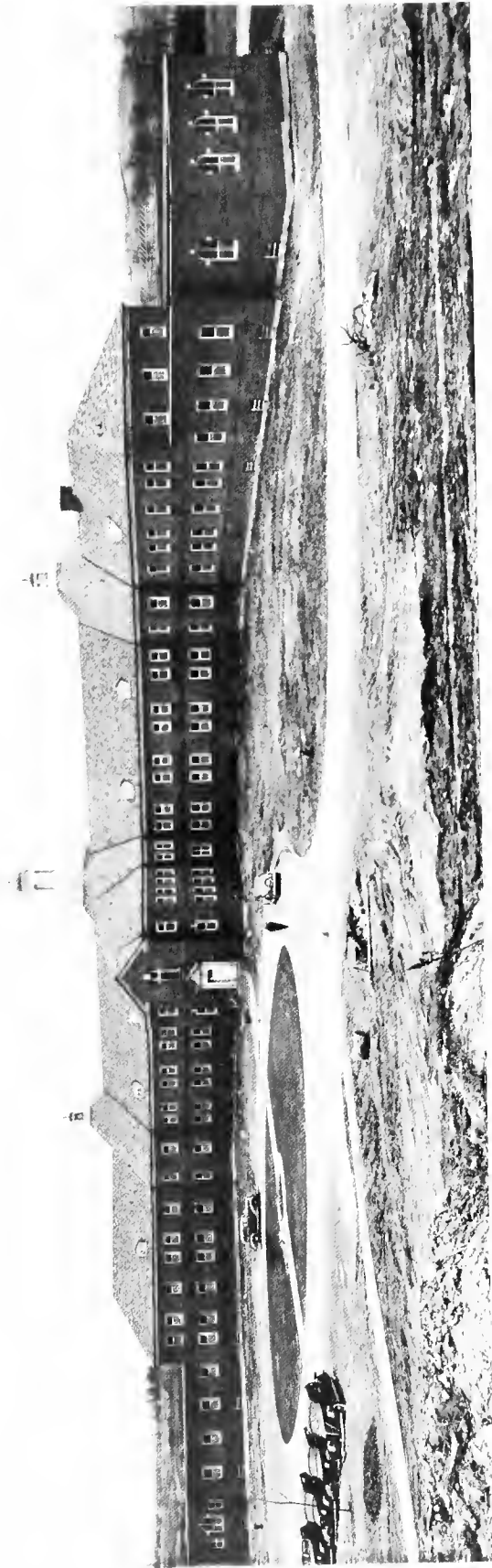
AIR VIEW OF U. S. HOUSING PROJECT KNOWN AS SCHONOWEE VILLAGE, SCHENECTADY, N. Y.

U. S. Housing Authority, Washington, D. C.

R. L. Bowen, *Architect*



GROUND VIEW OF SCHENECTADY HOUSING, SCHONOWEE VILLAGE, SCHENECTADY, N. Y.



GENERAL VIEW NEWARK, N. Y., STATE SCHOOL INFIRMARY BLDG. No. 35, NEWARK, N. Y.

Dept. of Public Works
Division of Architecture

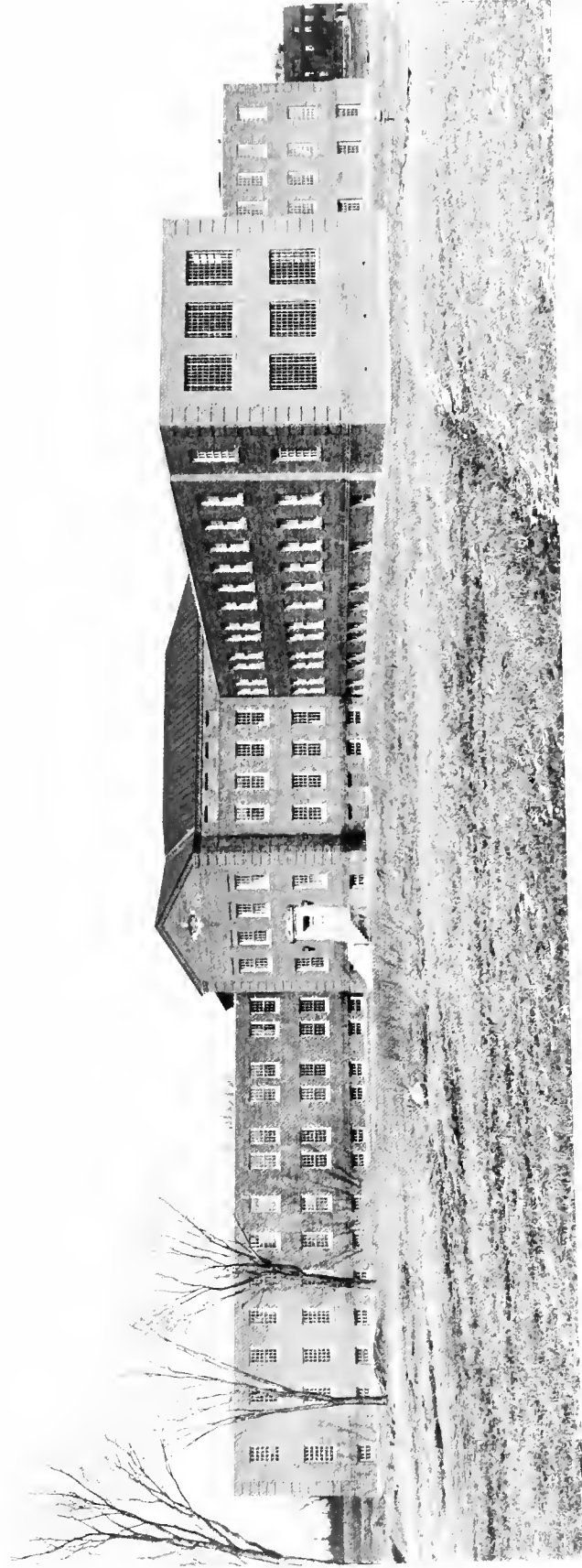
W. E. Haugaard, *Commissioner of Architecture*, Albany, N. Y.



ENTRANCE DETAIL, NEWARK STATE SCHOOL



TYPICAL INTERIOR VIEW, NEWARK STATE SCHOOL



GENERAL VIEW ROME STATE SCHOOL, CHILDREN'S INFIRMARY BUILDING. ROME, N. Y.

Dept. of Public Works
Division of Architecture
Albany

W. E. Haugaard, *Commissioner of Architecture*



GENERAL VIEW WILLARD STATE HOSPITAL, WILLARD, N. Y.

Dept. of Public Works
Division of Architecture
Albany

W. E. Haugaard, *Commissioner of Architecture*



COLLEGE OF FORESTRY, SYRACUSE UNIVERSITY, SYRACUSE, N. Y.

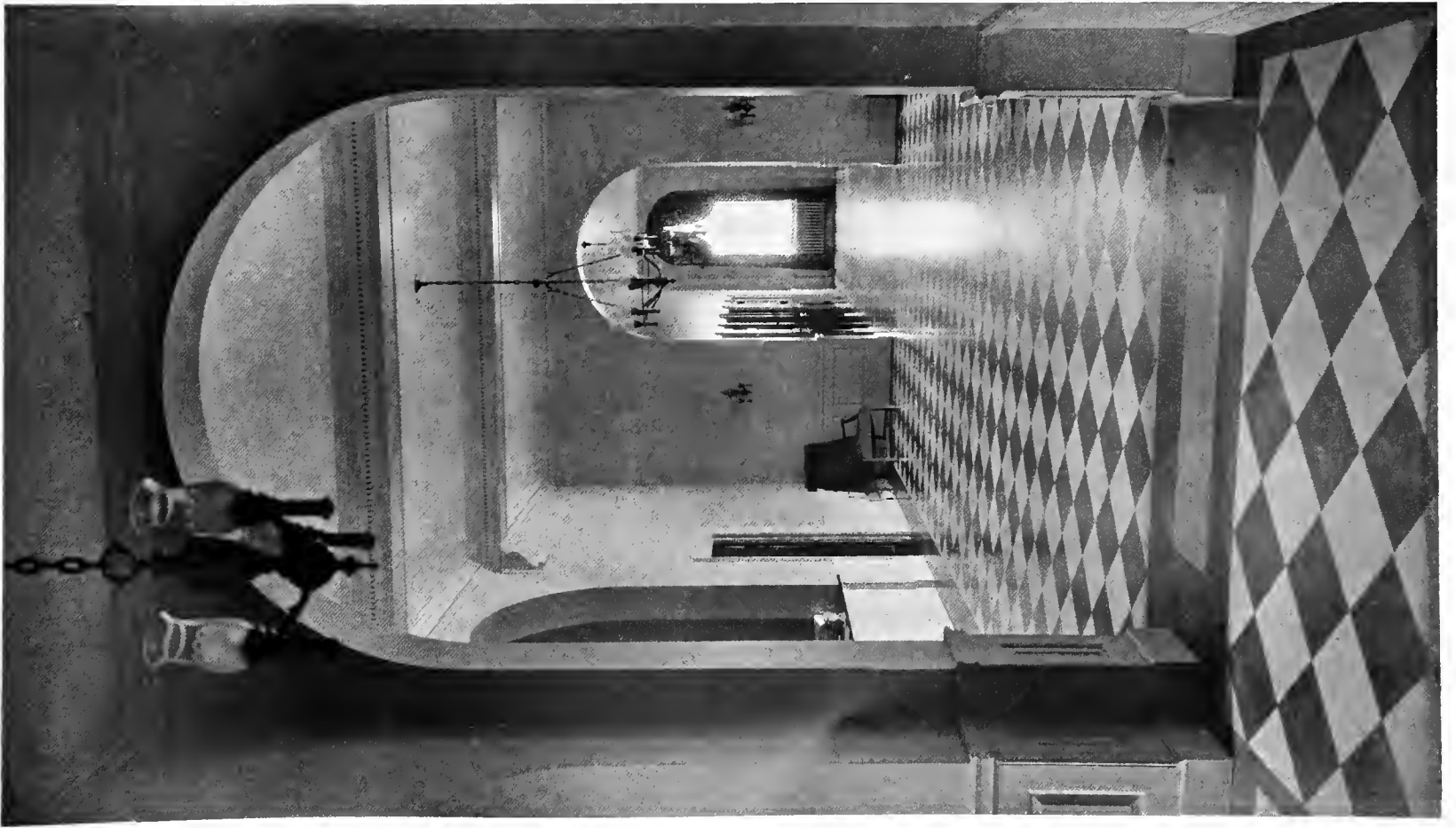
Dept. of Public Works
Division of Architecture

W. E. Haugaard, *Commissioner of Architecture*



GENERAL EXTERIOR VIEW
SYRACUSE MEMORIAL HOSPITAL, SYRACUSE, N. Y.

Office of John Russell Pope, *Architect*
and
Dwight James Baum, *Associate Architect*
Dr. S. S. Goldwater, *Consultant*

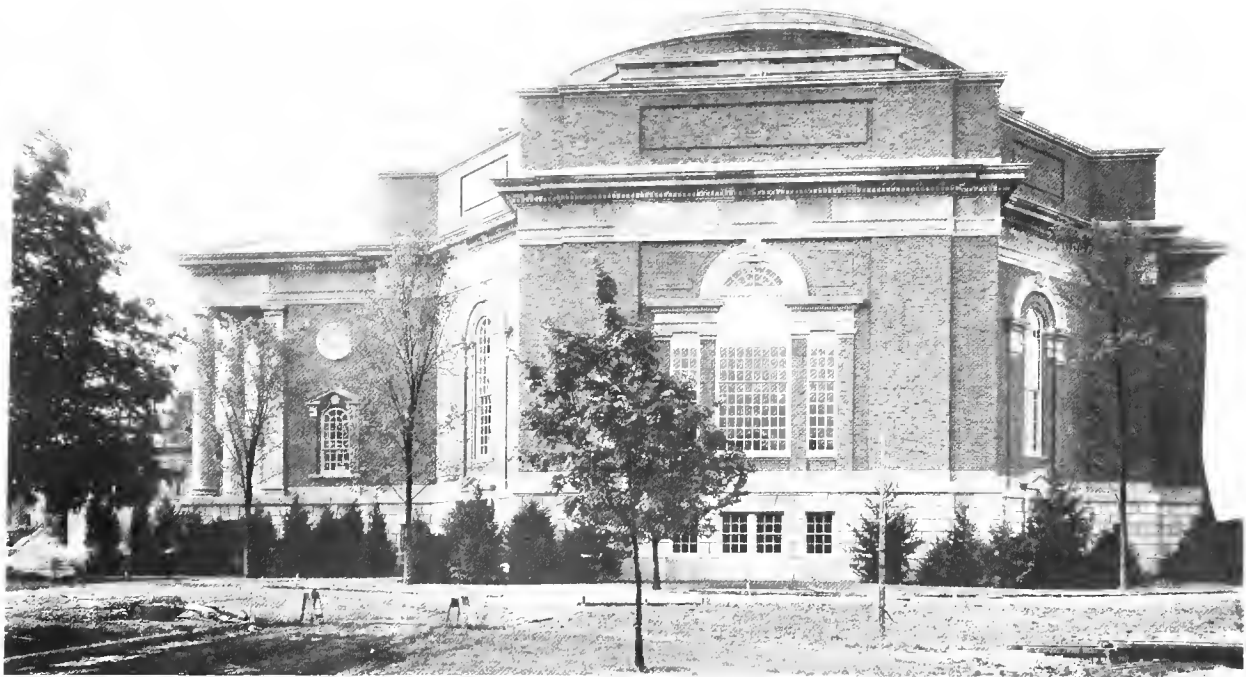
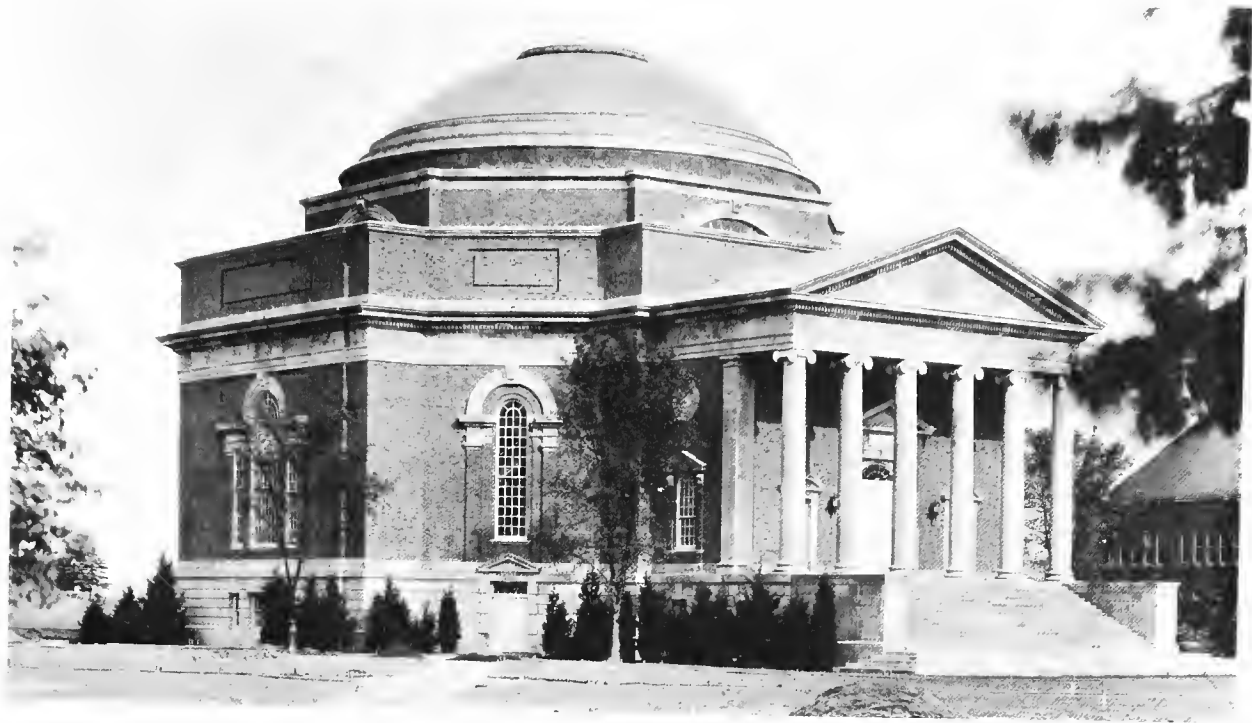


MAIN LOBBY



GENERAL LIVING ROOM OF NURSES' HOME
SYRACUSE MEMORIAL HOSPITAL, SYRACUSE, N. Y.

Office of John Russell Pope, *Architect*
and
Dwight James Baum, *Associate Architects*
Dr. S. S. Goldwater, *Consultant*



THE HENDRICKS MEMORIAL CHAPEL, SYRACUSE UNIVERSITY, SYRACUSE, N. Y.

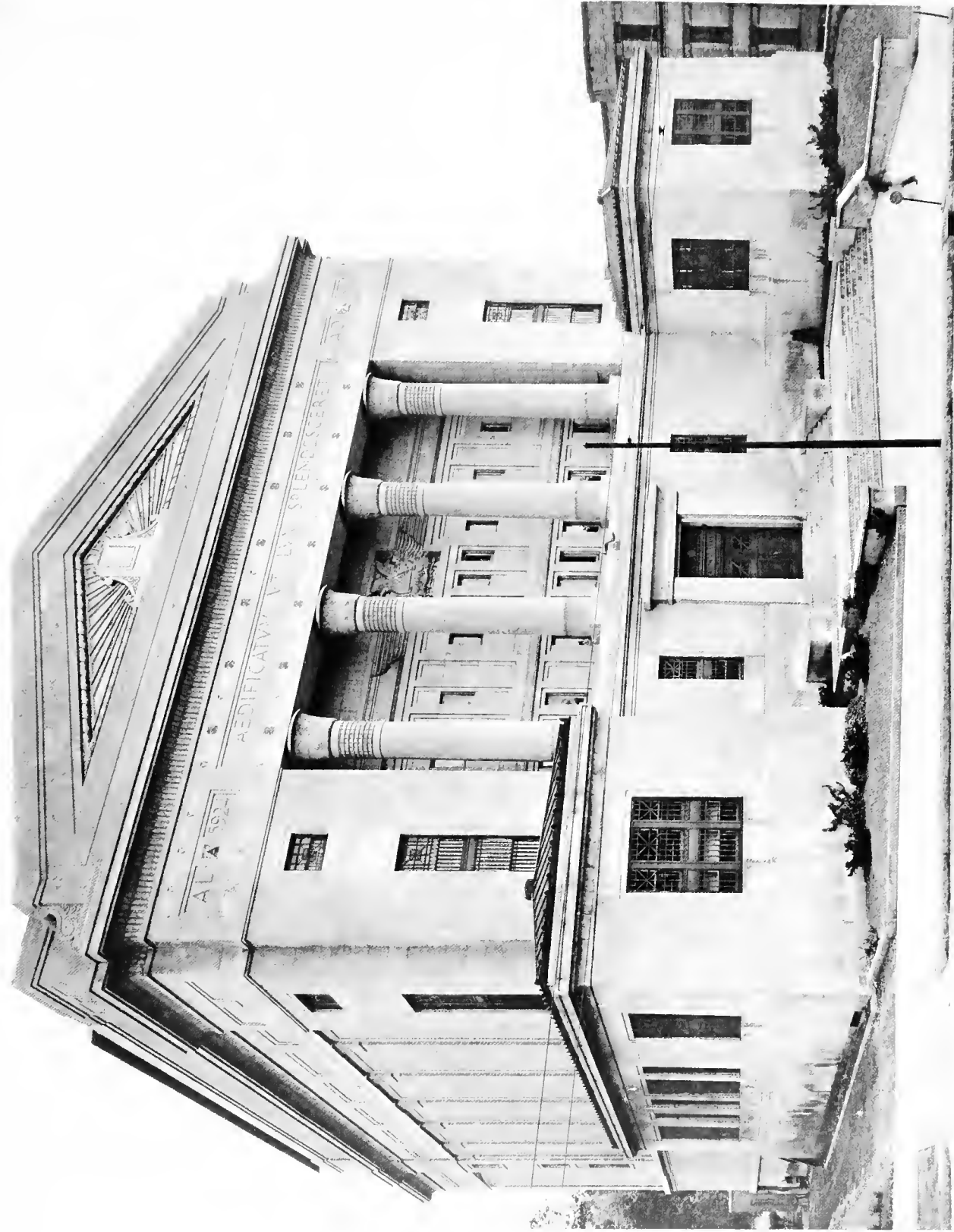
Office of John Russell Pope
Dwight James Baum, *Associate Architects*



INTERIOR AUDITORIUM, HENDRICK CHAPEL

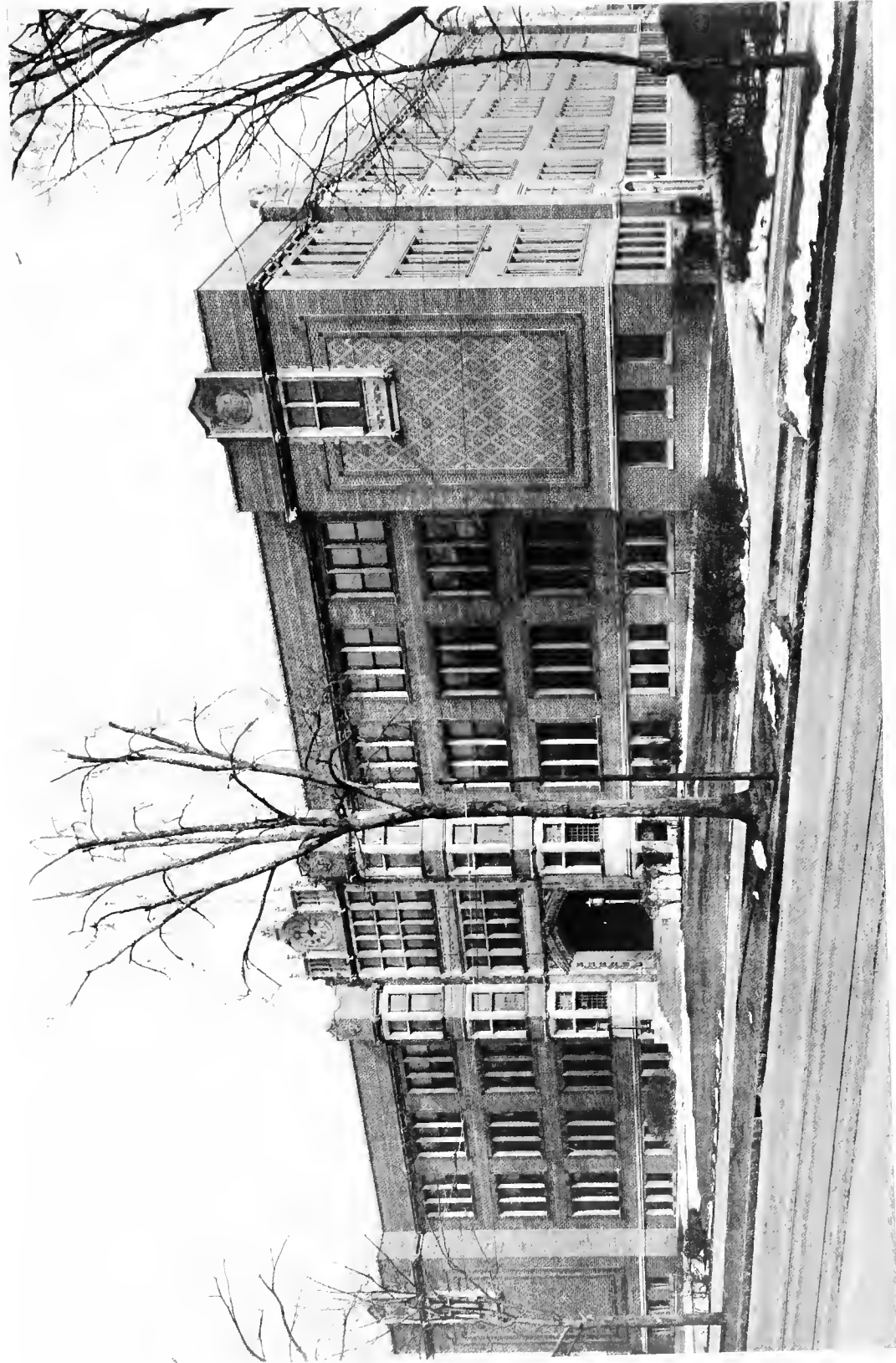
Office of John Russell Pope
Dwight James Baum, *Associate Architects*

THE FOLLOWING BUILDINGS CONSTRUCTED BY OUR
COMPANY ARE TYPICAL EXAMPLES OF WORK COMPLETED
DURING THE THIRTY YEARS PRIOR TO RECENT WORK
SHOWN ON PREVIOUS PAGES



MASONIC TEMPLE, SPRINGFIELD, MASS.

McClintock & Craig, Architects & Engineers



HIGH SCHOOL OF COMMERCE, SPRINGFIELD, MASS.

Kirkham & Parlett, Architects



GENERAL VIEW



INTERIOR

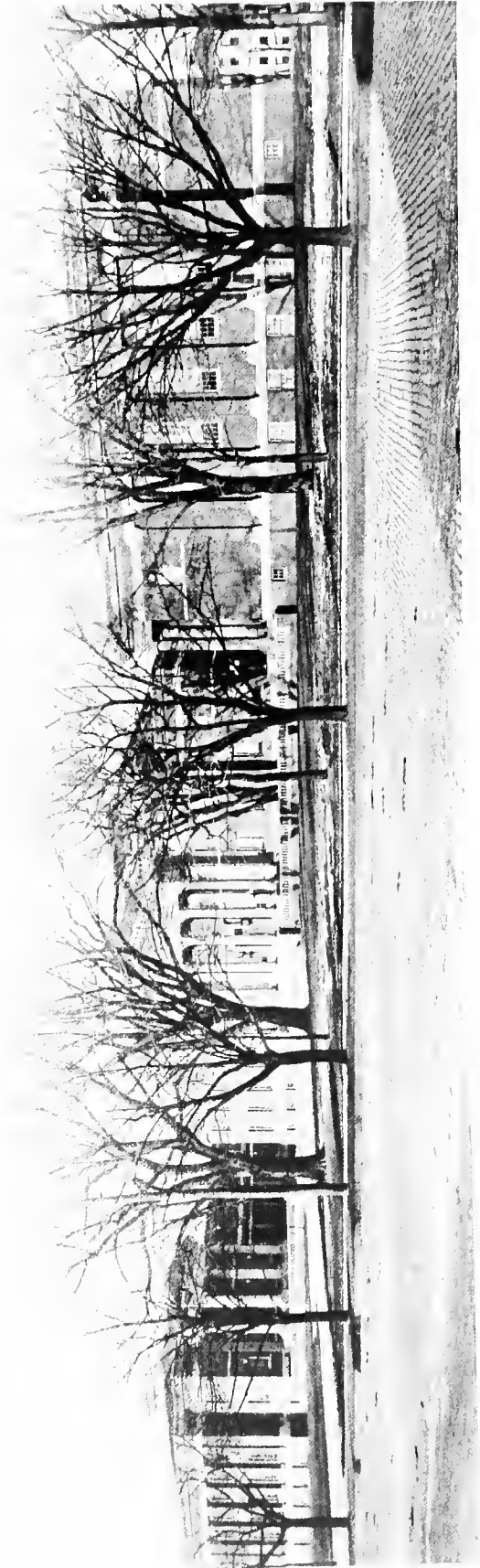
COURT HOUSE, CORTLAND, N. Y.

James Riely Gordon, *Architect*



MUNICIPAL GROUP, SPRINGFIELD, MASS.

Pell & Corbett, *Architects*



ALBANY NORMAL SCHOOL, ALBANY, N. Y.

F. B. Ware
Albert Randolph Ross, *Asso. Architects*

Telephone 3-0151

293 Bridge Street

FRED A. WEAKE INC.

Contractor for

PLAIN AND DECORATIVE PLASTERING

SPRINGFIELD, MASSACHUSETTS

*The following are some of the buildings we
have plastered for the A. E. STEPHENS CO.:*

**HENDRICKS MEMORIAL CHAPEL, SYRACUSE UNIVERSITY
SYRACUSE, N. Y.**

Architects: Office of John Russell Pope

**SPRINGFIELD SAFE DEPOSIT & TRUST CO.
SPRINGFIELD, MASS.**

Architects: Thomas M. James & Co.

**COURT HOUSE
CORTLAND, N. Y.**

Architect: James Reiley

**COURT HOUSE
PLATTSBURG, N. Y.**

Architects: Office of John Russell Pope

**ADMINISTRATION BUILDING, MATTEAWAN STATE HOSPITAL
BEACON, N. Y.**

Architects: State Architects

*Best Wishes to the Stephens Company
for their continued success.*

American Hard Wall Plaster Co.

UTICA, N. Y.

Manufacturers of Wall Plasters
Jobbers and Dealers in Building Supplies

**A. ROBERSON
& SON, Inc.**

BINGHAMTON, N. Y.



Architectural Millwork

TO

PRECISION OF DETAIL

AND

SPECIFICATIONS

MANUFACTURERS

STOCK AND SPECIAL MILLWORK

VAN DELIVERIES

ALBERT CLAEYS, Pres.

DONALD B. DERBY, Treas.

**SYRACUSE
FLOOR CO., Inc.**

WOOD FLOOR ENGINEERS

N. MIDLER & NEW COURT AVE.

SYRACUSE, NEW YORK

Telephone 2-7183



UNIT WOOD BLOCK FLOORS LAID IN MASTIC

PLANK FLOOR OF ALL TYPES

INDUSTRIAL END GRAIN FLOORS

and

ALL KINDS OF RESIDENTIAL WOOD FLOORS

H. NEWTON MARSHALL CO.

38 YEARS OF DISTINCTIVE SERVICE

PAINTERS & DECORATORS

BRICK WORK

C. O. STRUSE & SONS

PHILADELPHIA

GLAZED TILE WORK

PARTITION WORK

TER BUSH & POWELL INC.

GENERAL INSURANCE

AND

SURETY BONDS

WE ARE IN POSITION TO OFFER
COMPLETE SERVICE TO CONTRACTORS

— ANYWHERE —

Such Service Has Been Rendered to

A. E. STEPHENS COMPANY

on Some of the Buildings Shown in This Catalogue

423 State Street

:

Schenectady, N. Y.

AETNA STEEL PRODUCTS CORPORATION

Manufacturers of

HOLLOW METAL DOORS, JAMBS AND TRIM
STEEL DOOR FRAMES
ELEVATOR, STAIR AND DUMBWAITER
ENCLOSURES
KALAMEIN DOORS, FRAMES AND TRIM
TIN CLAD FIRE DOORS AND HARDWARE
COLD ROLLED SHAPES

Aetna products have been manufactured for nearly 40 years and our unusual manufacturing facilities, long experience, and organization trained in production and service, insure a high standard of quality and prompt deliveries.

Main Office and Plant

**87-109 RICHARDSON STREET
BROOKLYN, N. Y.**

REPRESENTATIVES IN ALL PRINCIPAL CITIES

Telephone:
EVergreen 8 - 6310

THE ELY LUMBER COMPANY

**LUMBER MERCHANTS
and WOODWORKERS**

HOLYOKE, MASS.



We furnished for the Schonowee Village Project the interior and exterior woodwork, window frames, sash and doors: A. E. Stephens Contractors, Springfield, Mass.



We specialize in interior and exterior custom woodwork and all kinds of building materials for public buildings, churches, hotels, educational institutions, residential and industrial requirements.

This Publication Compiled and Issued by

ARCHITECTURAL CATALOG CO.
Incorporated

Main Office

52 VANDERBILT AVE., NEW YORK, N. Y.

Telephone: MUrray Hill 2-6245

Chicago Office

82 West Washington Street, Chicago



Specialist in Architectural,
Building & Engineering Publications

BUILDING SPECIALTIES

FOR

CONCRETE, MASONRY & CARPENTRY WORK

For Operations shown in this catalog

were furnished by

HOHMANN & BARNARD, INC.
204 EAST 33rd STREET • NEW YORK CITY

Affiliated with

BARNARD FOUNDRY COMPANY
SPRINGFIELD, MASS.

HOLYOKE VALVE & HYDRANT CO.

•
HEATING & VENTILATING
AIR CONDITIONING
INDUSTRIAL PIPING
AUTOMATIC SPRINKLERS

•
HOLYOKE, MASS.
INCORPORATED 1903

BELMONT IRON WORKS

STRUCTURAL STEEL
FOR
Industrial and General Buildings

44 WHITEHALL STREET
NEW YORK CITY

•
General Office
PHILADELPHIA, PA.

Plants { EDDYSTONE
PHILADELPHIA, PA.
ROYERSFORD, PA.

Incorporated 1897

PREVENT!

- TERMITES
- SEEPAGE
- UNEVEN WALLS
- TORN CLOTHES and
- SCRATCHES FROM
PROTRUDING
FORM TIES

By Insisting Upon

RICHMOND'S TYING DEVICES
FOR
CONCRETE WALL CONSTRUCTION

A. E. STEPHENS COMPANY ARE
CONSTANT USERS OF THESE TIES

MANUFACTURERS

RICHMOND SCREW ANCHOR CO.
INCORPORATED

BUSH STREET

BROOKLYN, N. Y.

CENTRAL CITY ROOFING CO.

INC.

ENGINEERS AND CONTRACTORS

ROOFING
WATERPROOFING
MASTIC FLOORING
SHEET METAL WORK

**Manufacturers' Approved
Roofing Contractors**

1041-51 Erie Blvd. E.

Syracuse, N. Y.

"48 YEARS AT YOUR SERVICE"

ROSE & KIERNAN INC.

INSURANCE AND SURETY BONDS

The leaders in executing surety bonds

on

NEW YORK STATE CONTRACTS

We solicit your account

ARCHITECTURAL CATALOG CO., Inc.

ESTABLISHED 1911

Main Office : 52 VANDERBILT AVENUE, NEW YORK CITY

Telephone MUrray Hill 2-6245

Chicago Office: 82 WEST WASHINGTON STREET

Telephone Central 0895



**SPECIALISTS IN ARCHITECTURAL AND
ENGINEERING PUBLICATIONS**

ALSO

Publishers of "ARCHITECTURE and DESIGN"

ARCHITECTURAL CATALOG · CO., INC.

Main Office: 52 Vanderbilt Avenue, New York
Chicago Office: 82 West Washington St., Chicago

ARCHITECTURAL : ENGINEERING

AND

BUILDING PUBLICATIONS



Printed in the United States of America

